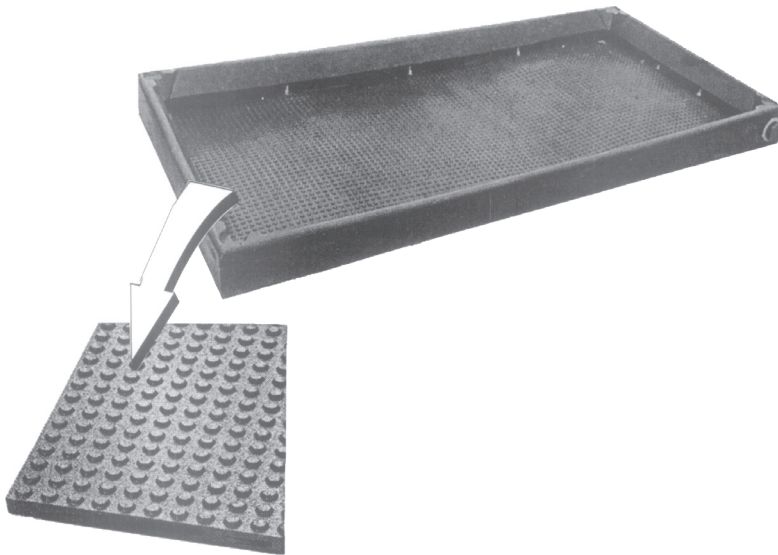


# POLY FOOTBATH WITH MAT



36" x 72" x 6" Poly Footbath 55 gallons (shipping weight 60 lbs.)

48" x 72" x 6" Poly Footbath 75 gallons (shipping weight 95 lbs.)

**Note:** Use of two footbaths is recommended by most veterinarians; the first for a water rinse and the second for disinfectant solution. The separate water rinse keeps disinfectant solution cleaner, longer.

## Features:

Replacement traction mat.

Lift handles on end and side.

2" diameter expansion drain plug.

Stainless steel mat anchor hardware.

Angled flange to protect cattle from anchoring hardware.

Heavy duty molded frame for long service life.

Ready to use - no assembly required.

Quick and easy way to clean and disinfect cattle's hooves.

## Footbath Facts:

- Washing action of footbath removes damaging material from feet and helps prevent buildup of dirt and manure between cleats, where harmful bacteria tends to harbor.
- Disinfectant solution (copper sulfate mixed with water or other solution), kills or inhibits bacterial infections such as hairy-warts, foot-rot and heel erosion. Penetrates up between toes and cracks (where bacteria inflames the soft skin), as well as under the horn lining and inner surfaces of each cleat.
- Disinfectant solution hardens the horn and toughens the skin in vital areas between cleats of the hoof. The drying effect then makes cattle's feet more resistant to bacterial infection.
- High-density, black, all-poly won't rust, rot, puncture or crack, even at extreme temperatures.
- Thick-walled, seamless, one-piece unit is extra-strong and leak proof.
- Button textured rubber mat provides a comfortable surface for cattle to walk on.

Eagle Dairy Direct<sup>sm</sup>

P.O. Box 4844, Syracuse, NY 13221

Toll Free: 1-866-591-2925

E-Mail: [info@eagledairydirect.com](mailto:info@eagledairydirect.com)

Fax: 315-433-2345

Web: [www.eagledairydirect.com](http://www.eagledairydirect.com)



**Eagle**  
Dairy Direct